

# LAGOON 620 OPAL



Discover this [even more luxurious and comfortable catamaran](#).

Lagoon 620 “OPAL” is an innovative solution to the needs of today's cruising yachtsman: beautiful design, strength, comfort & performance.

*OPAL is ideal for the client who want to experience [the art of living aboard in an innovative way](#).*

There is just nothing to compare to relaxing aboard this charming & luxurious catamaran. The architects Van Peteghem-Lauriot Prévost and Lagoon R&D (exterior) department and Nauta Yachts (Interior) fitted the Lagoon 620 with the latest developments in naval architecture.

Lagoon 620 OPAL with five queen size bed en-suite cabins design is very accommodating. Complete interior layout is elegantly incorporating wood finish, upholstery, inner liners, and more. A functional flybridge can also accommodate guests thanks to separate crew and reception areas.



Saloon and cockpit are beautifully integrated and include “wet bar”, areas for lazing around and the option on taking delicious meals inside or out without having to make any adjustments.

Lagoon 620 Opal, [available for charter in Croatia](#), has **5 queen size berth cabins** (sleeps up to 10 guests), all ensuite, plus separate cabins for three professional crew members.

### FEATURES YOU'LL LIKE:

3 Crew members

5 en-suite guest's cabins

Great array of water toys



### INCLUDED IN THE PRICE:

3 crew members (CAPTAIN & STEWARDESS & CHEF) • Water toys & equipment: fishing gear, towing ring, tender HIGHFIELD 460 & Honda 60 HP, snorkeling gear, water-skis, water tube, 2 x Stand-up paddle boards • Portable Bluetooth speaker JBL Xtreme 2 GM • Final cleaning, bedding, towels, beach towels & toiletry • WI-FI (1 TB weekly) • The Finest coffee types, selection of the best Croatian local products, kitchen and cleaning supplies • Daily preparation of breakfast, lunch and dinner • 13% VAT

# TECHNICAL SPECIFICATIONS & LAYOUT

**NAME**  
OPAL

**MODEL**  
Lagoon 620

**TYPE**  
Catamaran

**PRODUCTION YEAR**  
2017

**PROPULSION**  
2 X 150 HP

## The Layout



### Berth dimensions

160 cm x 205 cm x 120 cm

**18,90 m**  
Length over all

**10,00 m**  
Beam

**33,300kg**  
Displacement

**1,55 m**  
Draught

**5/10**  
Cabins / Berths





## LAGOON EXPERTISE

- infusion-moulding for increased weight saving (important for a catamaran), an optimal structure, and greater protection for the environment and shipbuilders
- interior woodwork in Alpi® reconstituted wood, a sustainable source that comes in a choice of finishes: light oak or teak
- vertical glazing for better protection against the sun and optimal space and height below deck
- gull-wing bridge deck with two steps for greater comfort in heavy seas
- VPLP design: performance under sail guaranteed!

## ABOVE DECKS

- double helm station provides perfect visibility when setting sail or manoeuvring
- a functional flybridge that can also accommodate visitors thanks to separate crew and reception areas
- a large sundeck forward
- forward and aft cockpits: a private area or open to guests, depending on your mood
- perfectly designed transom platforms for easy access to the sea when bathing or boarding a dinghy
- ease of movement around the boat thanks to flush deck panels and wide side decks that make for a generously proportioned boat with a practical design
- saloon and cockpit are beautifully integrated and include a "wet bar", areas for lazing around, and the option of taking meals inside or out without having to make any adjustments



## BELOW DECKS

- immense saloon with clearly defined dining, relaxing, sitting and navigation areas
- lateral galley in the port hull includes direct access to the saloon and a separate exit to the cockpit
- owner's cabin in the starboard hull with private sitting area and direct access to the cockpit
- luxurious, well-designed cabins with side access to beds, washrooms with separate showers, plenty of storage space, separate heads in the owner's washroom
- large hull windows and picture windows in the galley and aft starboard cabin give plenty of natural light
- indirect lighting in saloon and cabins provides softer light and the saloon windows can be fitted with blinds
- engine compartments are far from the living areas and perfectly insulated.



GUEST CABIN.



GUEST CABIN.





# SAILING DESTINATION

New destinations every day. Deserted beaches. Clandestine hangouts. Your own playground on the water. Some experiences can only be achieved with a yacht. Discover everything that the Adriatic has to offer, from the old city of Dubrovnik and Korcula, night life of Split & Hvar, waterfalls near Sibenik, sea organs in Zadar, to hidden coves on Kornati Islands. One thing is certain - You will embark on a beautiful adventure, no matter which destination you choose.



**BESPOKE SAILING HOLIDAY\*** Island-speckled coastline at your hand, no matter in which direction you are sailing. Enjoy crystal clear waters off your private floating hotel.



RELAX. SAIL. DISCOVER...



CUISINE ON BOARD.



*Experience gastronomic and oenological excellence aboard tailored to your preferences...*













# CREW PROFILE:



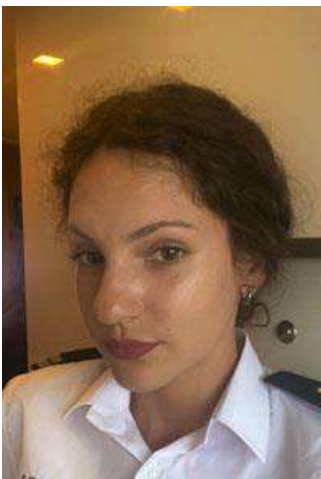
## YOUR CAPTAIN

After a couple of years, Igor replaced the corporate environment with the operations manager position in a hospitality company. After years of amateur sailing and boating in a private arrangement, Igor transferred his career in the very same direction. He sailed and did boat transfers as a boat captain and as a part of the crew over The Mediterranean and the Adriatic Sea. The ability to remain calm under pressure and quick decision making was a great asset when he started his boat skipper/captain career. Igor is experienced and skilful captain that will make your charter unforgettable.



## YOUR CHEF

Vedrana was born in Zagreb and holds a strong background in customer service and hospitality. She started as a bar coordinator and later on as sommelier assistant, which ultimately led her to a one-year trip to Canada where she worked as an assistant buyer for a canadian boutique. Finally, she has more than 4 years of experience as a Yacht stewardess and yacht Cook on luxury crewed catamarans. She is in charge of all guests and crew meals and runs a complete management of the galley. Ask Vedrana about the wines and food pairing, she'd be more than happy to share her knowledge with you. Likewise, she can organize a wine tasting on your catamaran.



## YOUR STEWARDESS

Nadja is a hardworking, organised, motivated, professional, patient and reliable yacht stewardess with more than three years of experience in the hospitality industry. She has extreme passion for service and a dedication to guest satisfaction. Skilled in providing high-quality service in a fast-paced environment while maintaining a positive attitude.





LAGOON 620  
OPAL

